

Biotinylated Human HLA-G&B2M&Peptide (RIIPRHLQL) Tetramer Protein

Cat. No. HLG-HM41CTB

Description	
Source	Recombinant Biotinylated Human HLA-G&B2M&Peptide (RIIPRHLQL) Tetramer Protein is expressed from HEK293 with His tag and Avi tag at the C-Terminus, tetramer is assembled by biotinylated monomer and streptavidin. It contains Gly25-Thr305(HLA-G), Ile21-Met119(B2M) and RIIPRHLQL peptide.
Accession	P17693-1(HLA-G)&P61769(B2M)&RIIPRHLQL
Molecular Weight	The protein has a predicted MW of 258 kDa. Due to glycosylation, the protein migrates to 260-265 kDa under Non reducing (N) condition based on Tris-Bis PAGE result.
Endotoxin	Less than 1EU per µg by the LAL method.
Purity	> 95% as determined by Tris-Bis PAGE

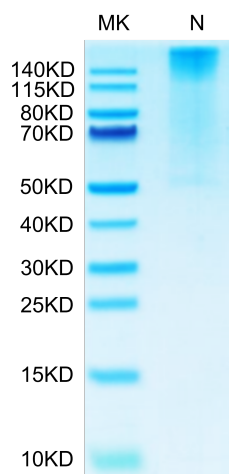
Formulation and Storage	
Formulation	Lyophilized from 0.22µm filtered solution in PBS (pH 7.4). Normally 8% trehalose is added as protectant before lyophilization.
Reconstitution	Centrifuge the tube before opening. Reconstituting to a concentration more than 100 µg/ml is recommended. Dissolve the lyophilized protein in distilled water.
Storage	-20 to -80°C for 12 months as supplied from date of receipt. -20 to -80°C for 3-6 months in unopened state after reconstitution. 2-8°C for 2-7 days after reconstitution. Recommend to aliquot the protein into smaller quantities for optimal storage. Please minimize freeze-thaw cycles.

Background

HLA-G is a molecule that was first known to confer protection to the fetus from destruction by the immune system of its mother, thus critically contributing to fetal-maternal tolerance. The first functional finding constituted the basis for HLA-G research and can be summarized as such: HLA-G, membrane-bound or soluble, strongly binds its inhibitory receptors on immune cells (NK, T, B, monocytes/dendritic cells), inhibits the functions of these effectors, and so induces immune inhibition.

Assay Data

Tris-Bis PAGE



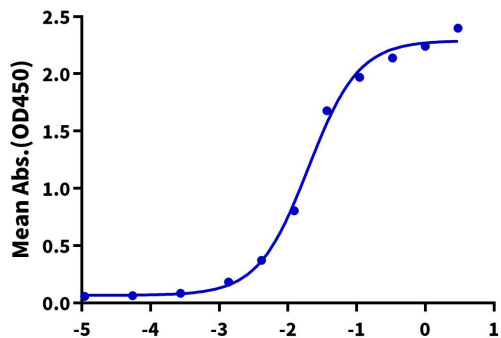
Biotinylated Human HLA-G&B2M&Peptide (RIIPRHLQL) Tetramer on Tris-Bis PAGE under Non reducing (N) condition. The purity is greater than 95%.

ELISA Data

Assay Data

Biotinylated Human HLA-G Tetramer, His Tag ELISA

0.1µg Anti-HLA-G Antibody, hFc Tag Per Well



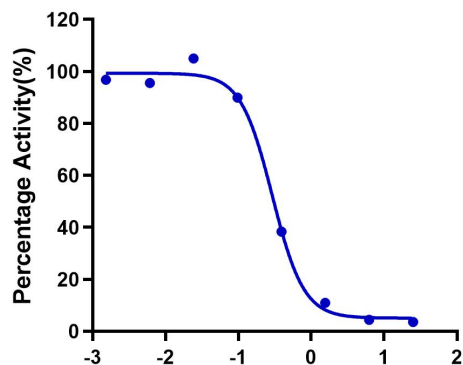
Immobilized Anti-HLA-G Antibody, hFc Tag at 1µg/ml (100µl/well) on the plate. Dose response curve for Biotinylated Human HLA-G&B2M&Peptide (RIIPRHLQL) Tetramer, His Tag with the EC50 of 19.9ng/ml determined by ELISA (QC Test).

Log Biotinylated Human HLA-G Tetramer, His Tag Conc.(µg/ml)

Blocking Data

Inhibition of Human LILRB2 and HLA-G Binding

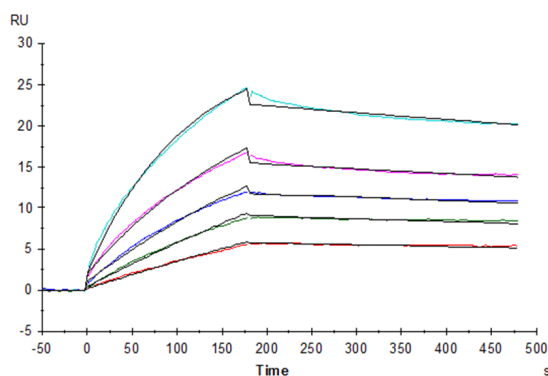
0.5µg Human LILRB2, mFc Tag Per Well



Serial dilutions of Anti-LILRB2 Antibody were added into Biotinylated Human HLA-G&B2M&Peptide (RIIPRHLQL) Tetramer, His Tag: Human LILRB2, mFc Tag binding reactions. The half maximal inhibitory concentration (IC50) is 0.29µg/ml.

Log Anti-LILRB2 Antibody, hFc Tag Conc.(µg/ml)

SPR Data



Human LILRB2, hFc Tag captured on CM5 Chip via Protein A can bind Biotinylated Human HLA-G&B2M&Peptide (RIIPRHLQL) Tetramer, His-Avi Tag with an affinity constant of 4.38 nM as determined in SPR assay (Biacore T200).